







# COLUMBUS BRIDGE PROTOCOL

## PROTOCOLLO CLINICO

4-6 IMPIANTI RUVIDI AD ESAGONO ESTERNO  
IMPIANTI: +/- LUNG. 13 mm. +/- DIAM. 4 mm.  
SOTTOPREPARAZIONE DEL SITO IMPLANTARE  
TORQUE INSERTION: +/- 40 Ncm  
IMPIANTI INCLINATI IN OSSO RESIDUO  
IMPIEGO DI PILASTRI CONICI PRE-ANGOLATI  
ESCLUSIONE TECNICHE RIGENERATIVE OSSEE

## PROTOCOLLO PROTESICO

PROTESI FISSA PROVVISORIA AVVITATA  
IMPRONTA IN GESSO CON TECNICA PICK UP  
SPLINTAGGIO RIGIDO CON FRAMEWORK METALLICO  
PASSIVAZIONE CON TECNICA INCOLLAGGIO  
SUPERFICIE OCCLUSALE IN ACRILICO  
ASSENZA DI CANTILEVER DISTALI  
CARICO IMMEDIATO FUNZIONALE 24<36 ORE

# TORONTO A CARICO IMMEDIATO:

(RIABILITAZIONE IMPLANTOPROTESICA FISSA DEL  
MASCELLARE EDENTULO CON FUNZIONE IMMEDIATA)

# IL SUPPORTO DELLE PROCEDURE ODONTOTECNICHE

Andrea De Benedetto



























# **IL COMPOSITO IBRIDO MATERIALE ESTETICO ERGONOMICO**

**LE PROCEDURE DI  
STRATIFICAZIONE LIBERA E  
LA TECNICA DI STAMPAGGIO**

**Andrea Saviol**





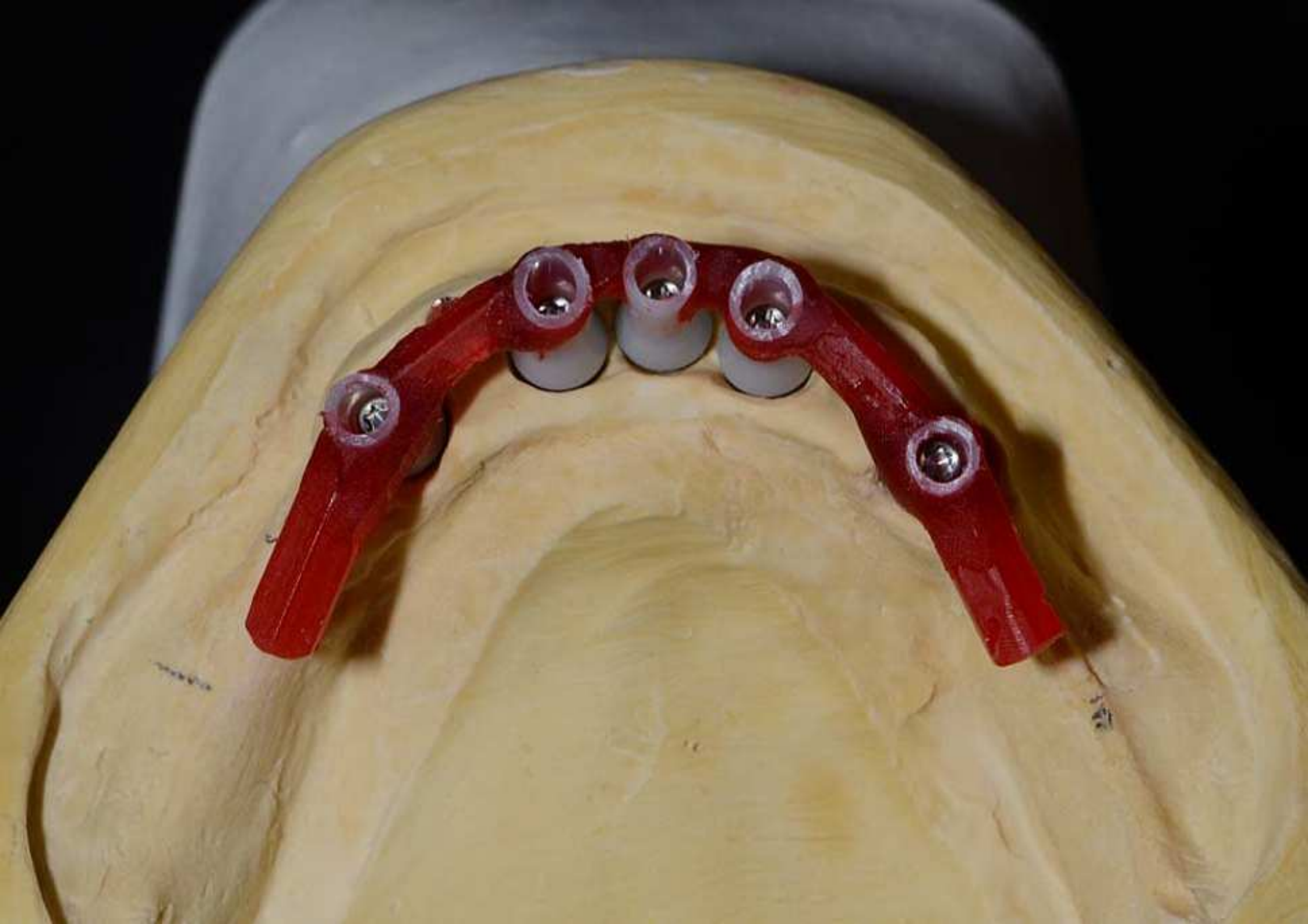






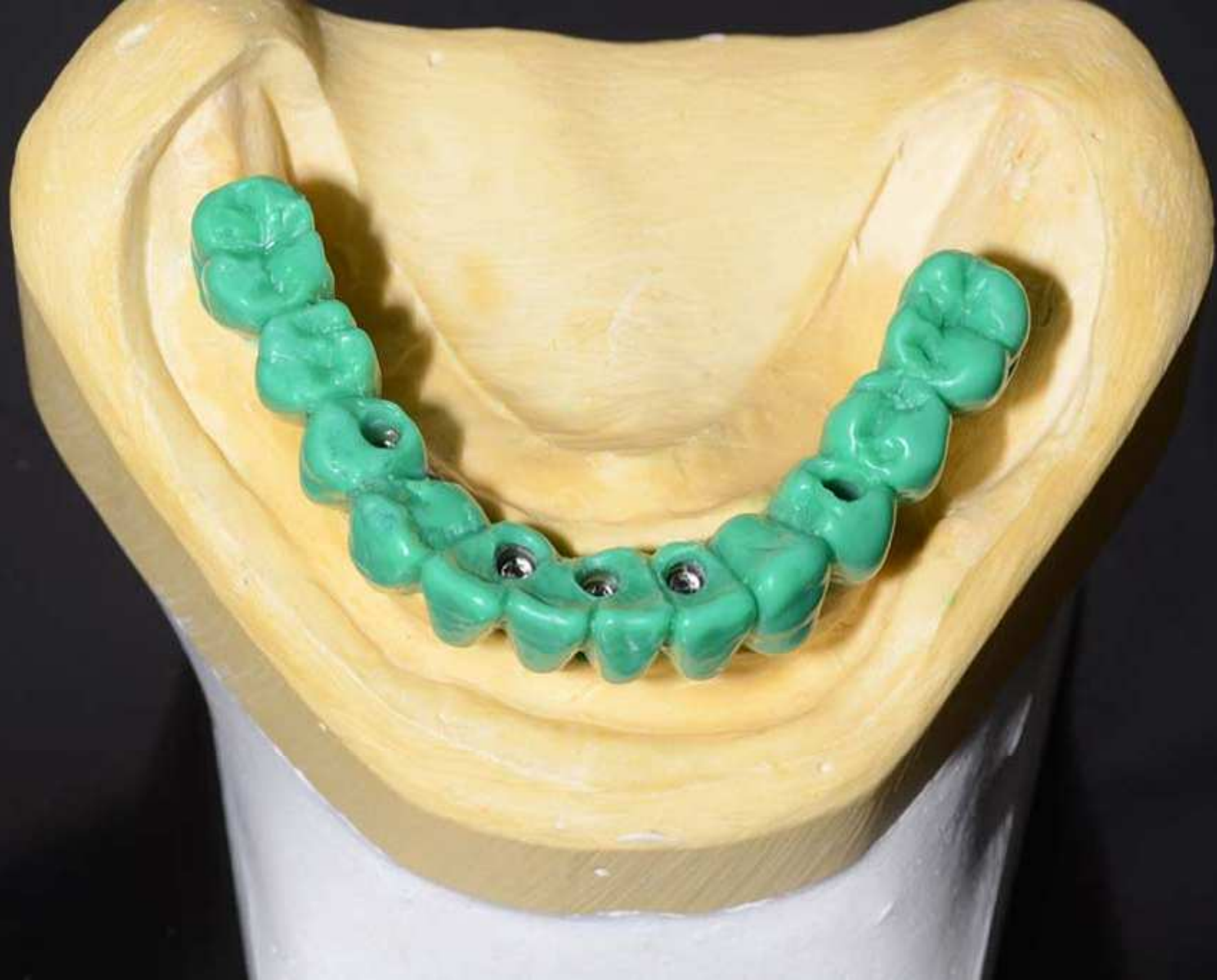








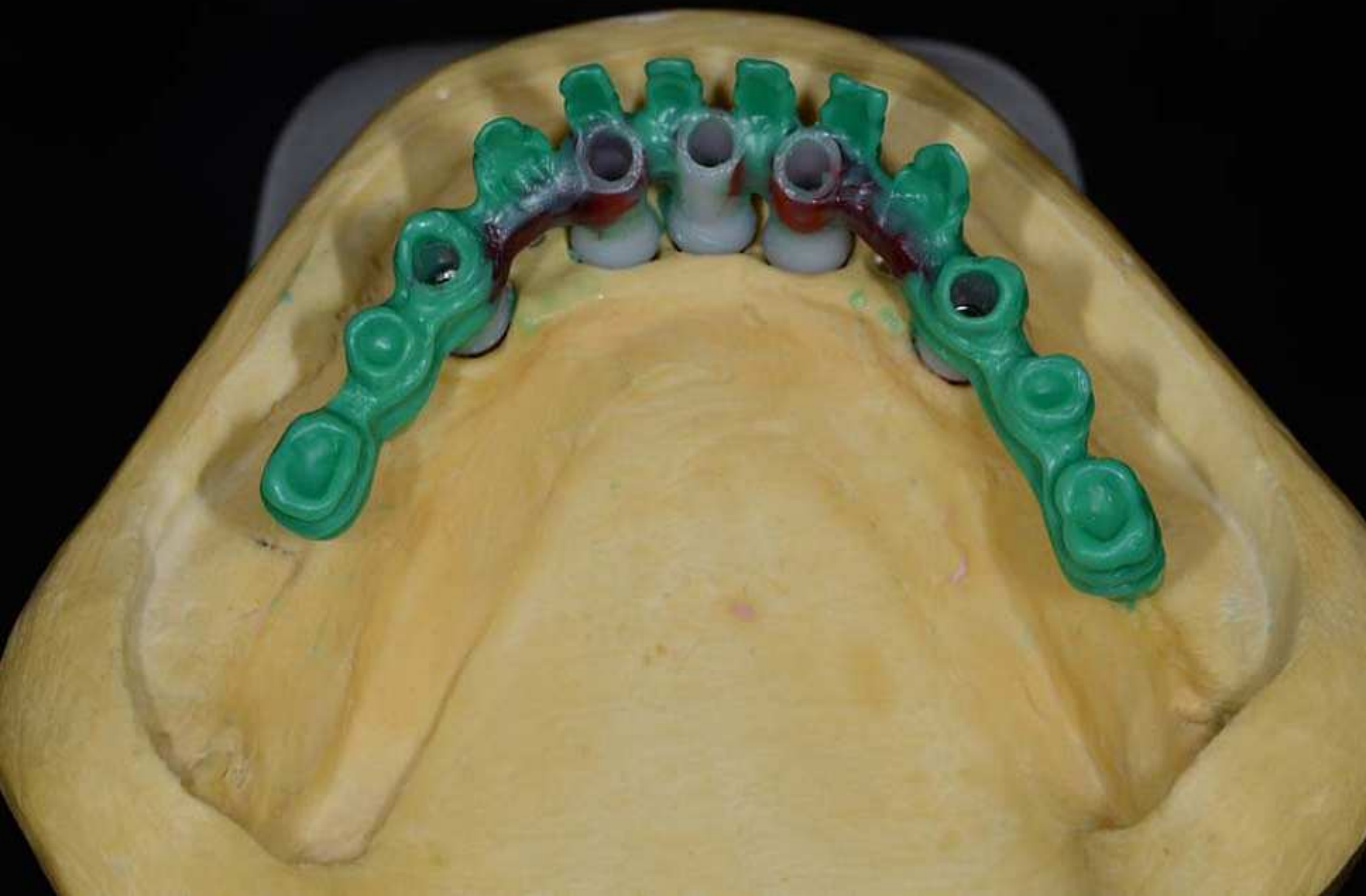




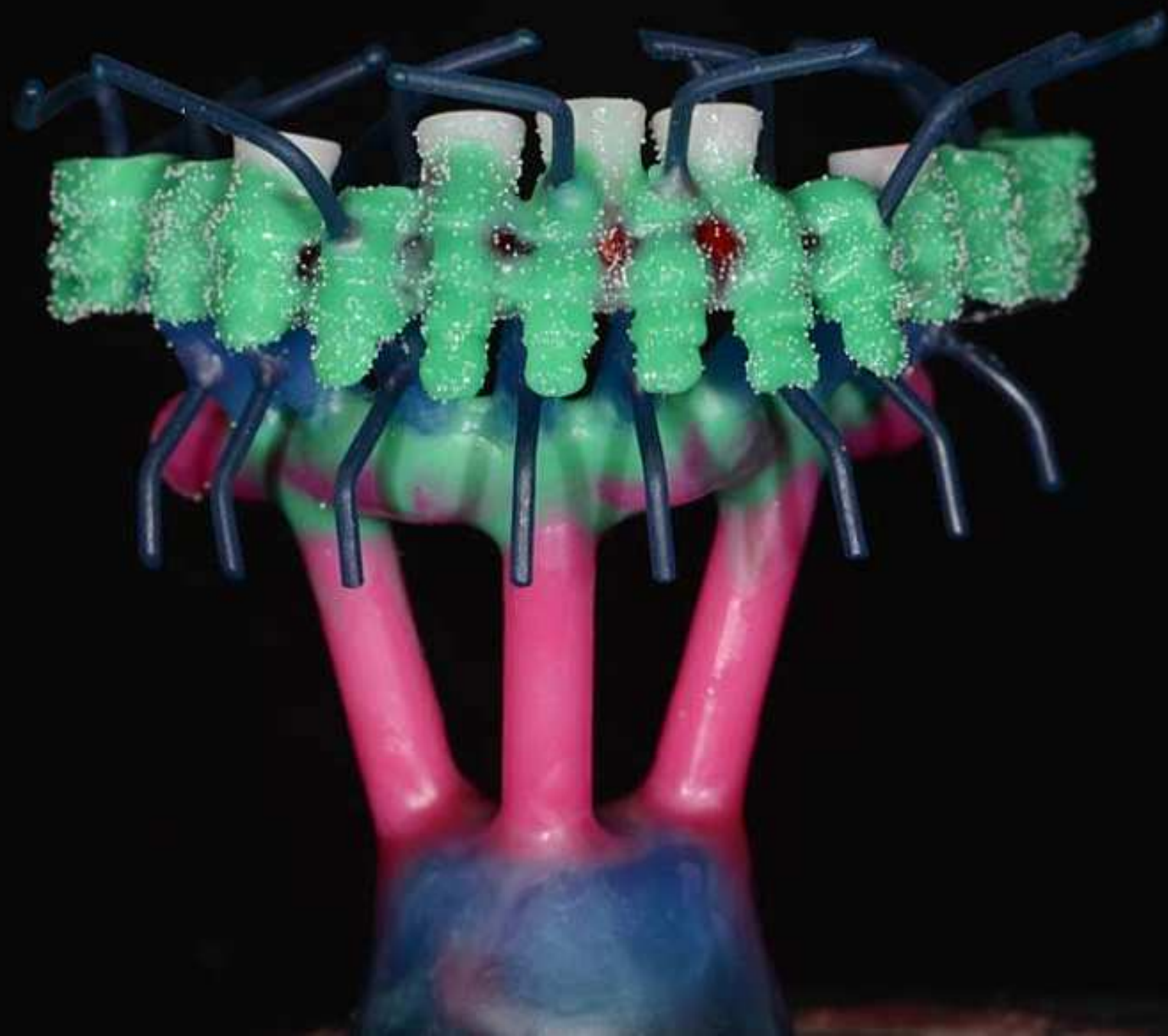










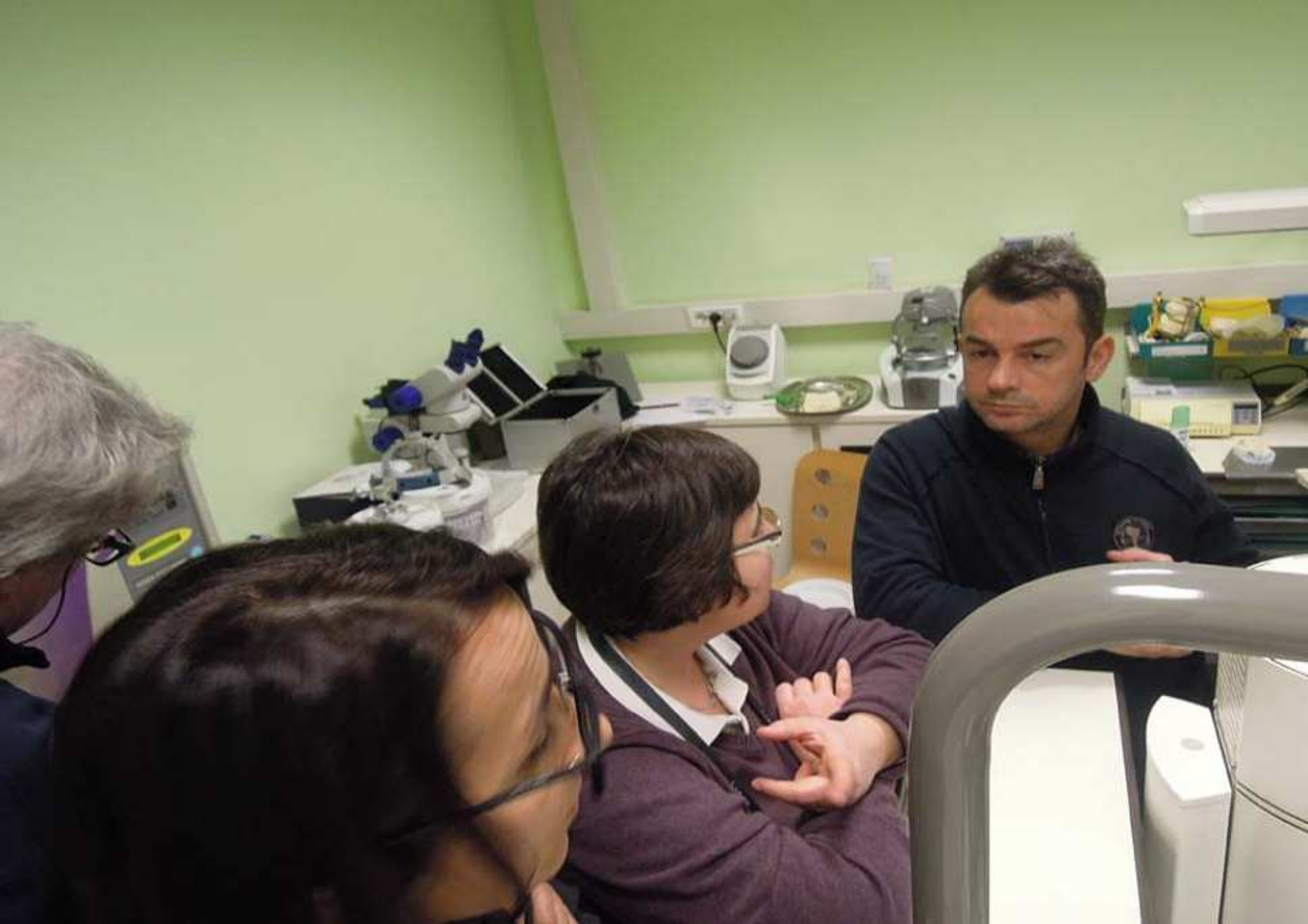




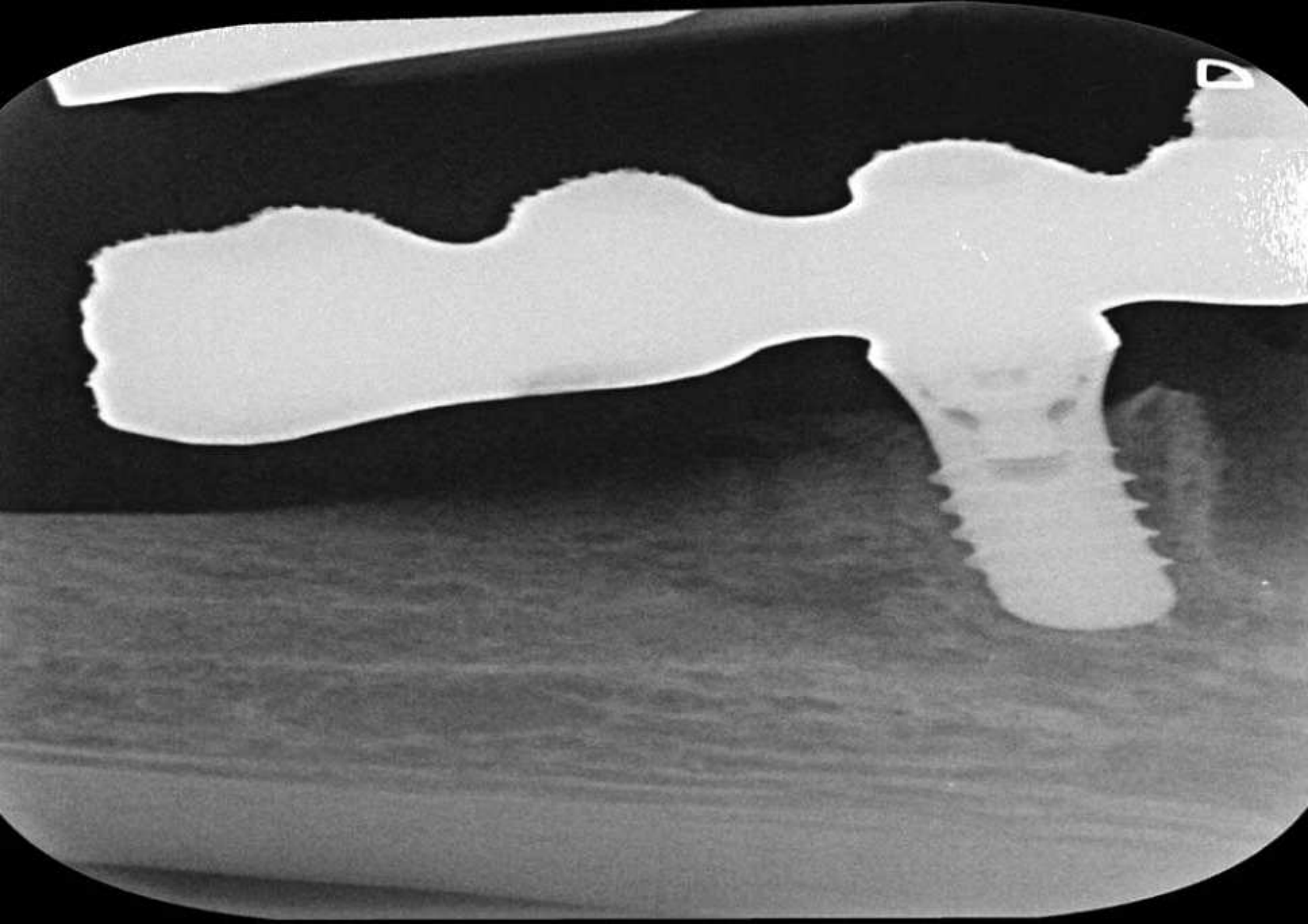


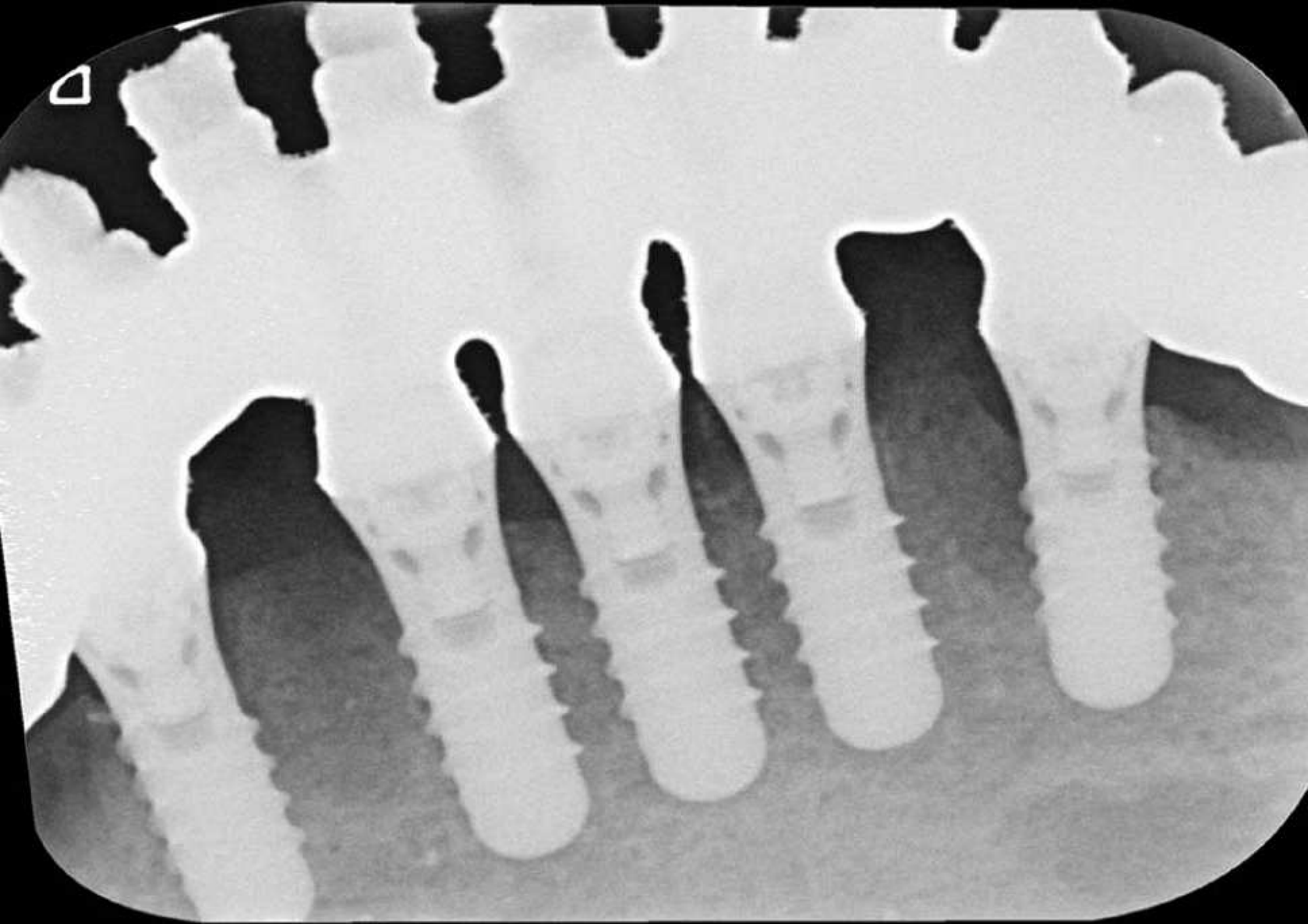


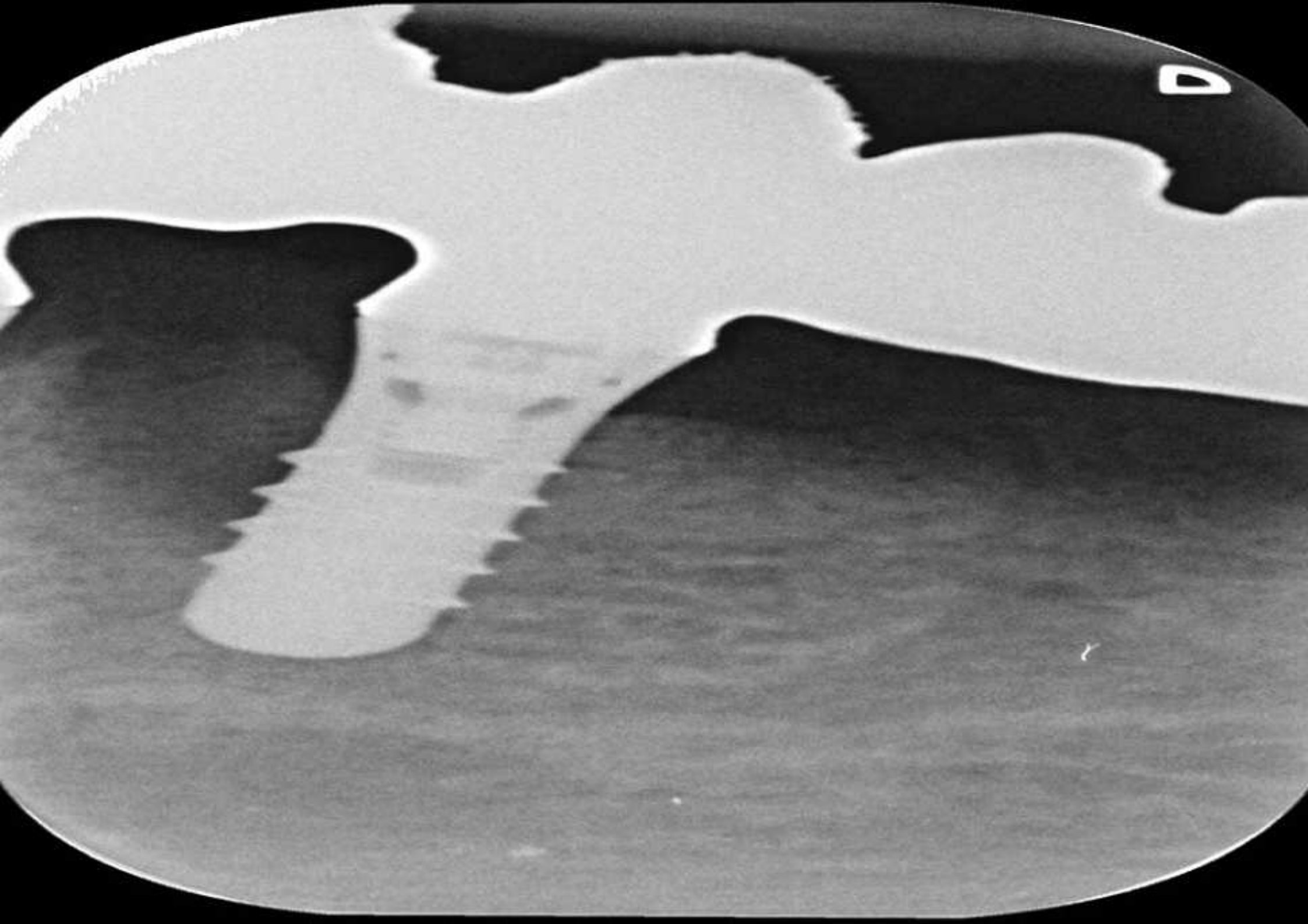


















































































DEI experience lamp

Attention  
Lamp hot

EXPERIENCE









DEI<sup>®</sup> experience lamp

Attention  
Lamp hot





experience lamp

Attention  
Lamp hot



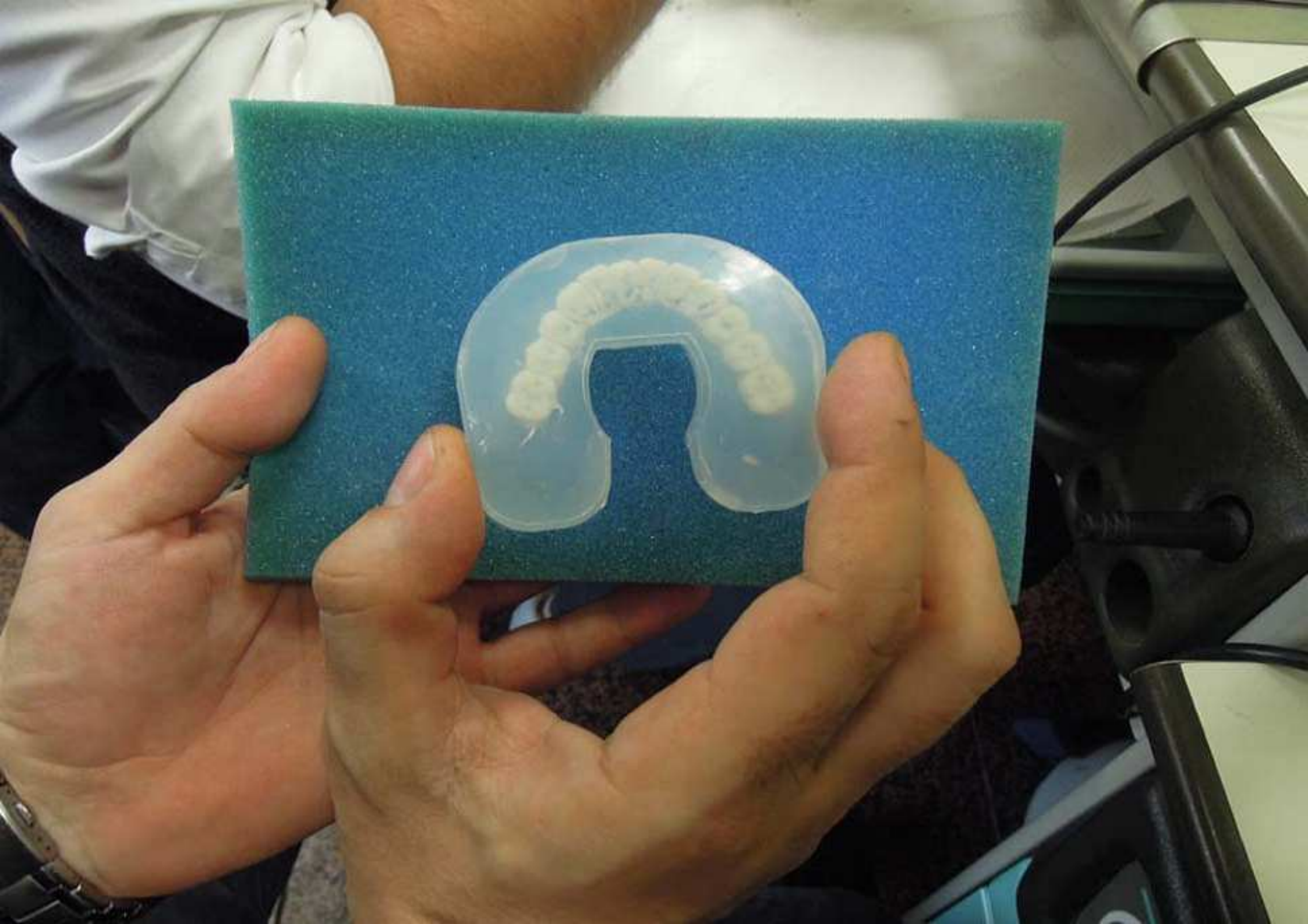












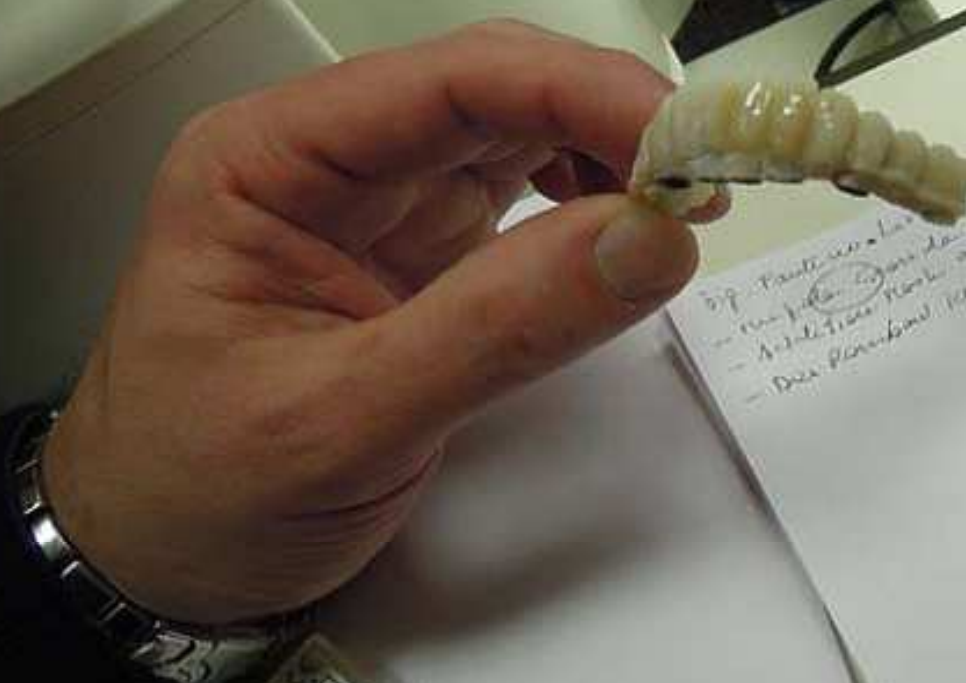




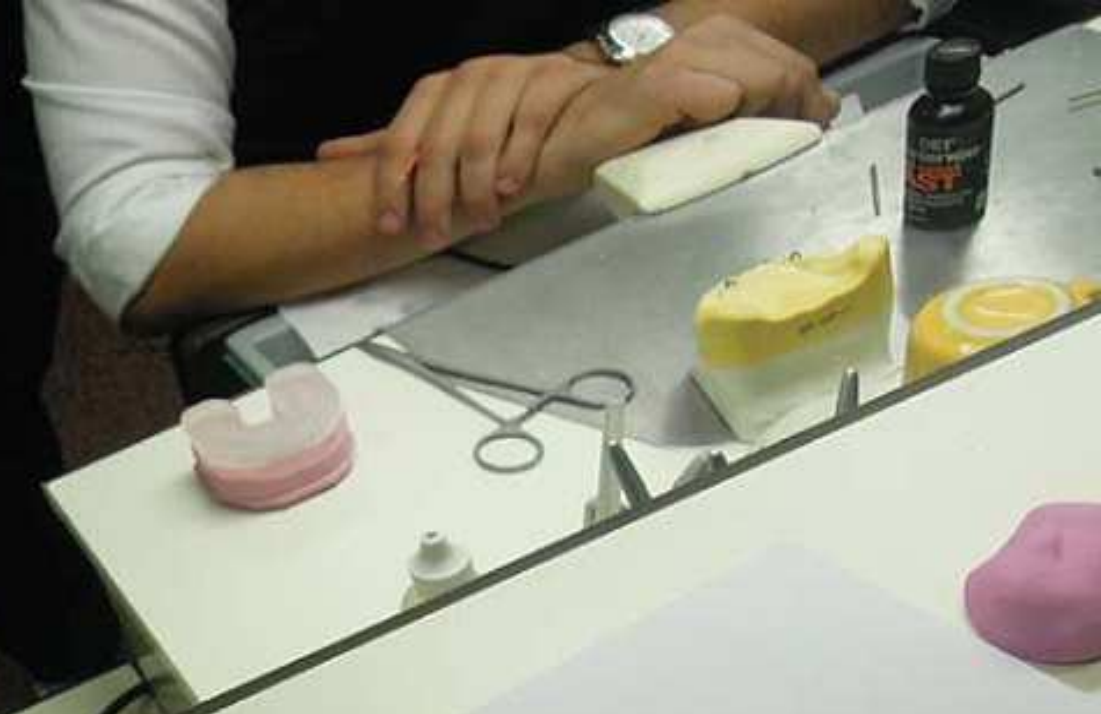








Sp. Patient - 10/10  
- 100% full - 10/10  
- Anterior - 10/10  
- Distal - 10/10



















DEI Italia

DEI®  
**experience**  
**polish paste**

pasta per la lucidatura dei compositi  
paste for polishing composites  
pasta para pulido de composites

35 g



















